



Paul Hemann
Realty Branch Mgr.
304-633-1622
paul.hemman@real.com



Larry Bailey
Realtor
304-654-1926



304-733-9000
www.mudriver.com

L. David Dean, Broker
Fax: 304-733-9500
5356 Rt. 60 East, Huntington, WV 25705



Ronna Clark
Realtor
304-633-4734
ronnaclark@aol.com



Jeremy Toler
Realtor
304-646-4491



Christi Nolan
Realtor
304-417-4625



This home deserves "The Entertainer of the Year" award. Updated w/modern decor throughout. Located in East Pea Ridge & priced to sell. #117912 Call Christi 417-4625 \$154,000



Huge Price Reduction!
Updated, Move Right In! Updated galore & gorgeous 4 BR, 2 BA. Add'l lots available with this home. Don't wait. Call now for details. \$89,950. #117308 Ronna 633-4734



Drastic Price Reduction!
Union Ridge Rd. 13 Acres, 3 BR, 1 BA, barn, pasture, house needs TLC. Motivated Seller. \$90,000 #115186 Paul 633-1622



Price Reduced
Investor, Handy person Special. 3BR, 1.5 BA, Lg. Gathering Rm. #117963 \$24,900 Jeremy 646-4491/Ronna 633-4734



40x165 Lot Washington Ave., w/ house. Owner says zoned commercial \$50,000 #114845 Larry 654-1926



Kenova Located on .45 city lots, this home offers 2 BR, 1 BA, basement, new furnace/AC & other updates. #116273 Call Larry 654-1926



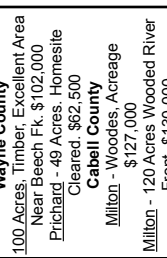
4 BR, 3 BA
WOW - Brick Rancher w/lots of updates plus large garage w/add'l living quarters, on .69 acre. #117984 \$174,900 Ronna 633-4734



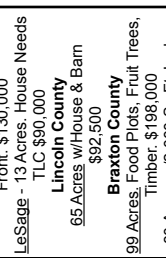
Price Reduced
All of the Works Done. Kick your feet back & enjoy this roomy rancher. Included is a full equipped kitchen for the chef and 2 bathrooms big enough to swim in. Price Reduced Drastically! #116870 \$105,000



HUNTING LAND
Wayne County
100 Acres, Timber, Excellent Area Near Beech Fk. \$102,000 Pritchard - 49 Acres, Homesite Cleared. \$62,500 Cabell County
Milton - Wooded, Acreage \$127,000
Milton - 120 Acres Wooded River Front. \$130,000
LeSage - 13 Acres, House Needs TLC \$90,000
Lincoln County
65 Acres w/House & Barn \$92,500
Braxton County
99 Acres, Food Plots, Fruit Trees, Timber. \$198,000
80 Acres w/2,000 Sq. Ft. Lodge 3 BR. \$249,000
Call Paul 304-633-1622



Unbelievable Special! 4 BR, 5 BA, Office, large living room, oversized 2 car garage, huge gas & water lines, 8000 sq. ft. #117849 \$289,000 Call Ronna 633-4734



Charleston Investment Opportunity
7 rental units, great income potential! \$120,000 Call Ronna for details 633-4734 #117336



New Price - \$699,000
Commercial/Industrial Users. 92,000 sq. ft. of usable space, 3.5 acres. Ch of Huntington. 2 bldg locks, any, 20,000 sq. ft. has been renovated, plus offices. Close to 64, easy access! Call Paul 633-1622



New Listing
LeSage Area - First time buyers, retirees, 3 BR, 1 BA on 2+ acres. Estate sale, being sold "as is". Home looks to be in average condition. Call Paul 633-1622. You might be what you are looking for. \$45,900 633-1622



Large Building with retail store and apartments. Close to Rt. 60 and I-64. Call Jeremy Toler 646-4491



Walking Distance to St. Mary's Med. Center. Nice home, off-street parking, carpet, 1.5 BA, 2 BR & more. \$89,900. Cheaper than Rent! #118144. Ronna 633-4734



Owner Says Sell!
Doublewide lots "Heath Creek Estates", Lg. 97x190 Avg. lots being developed, 1/2 mile from bottom of Davis Creek Hill Salt Rock side on left. #116980 \$26,900. Call Paul 633-1622 for details.



65 Acres 4 BR, 1 BA, 100 yr. old farmhouse, barn & more. \$92,500 #115145 Paul 633-1622



Price Reduced
E. Pea Ridge Beauty! This spacious townhome has an open floor plan w/3 BR, 2.5 BA. The gathering room offers a gas log fri. Kitchen has white cabinets w/loads of counter space w/ breakfast bar. #114949 \$146,900 Ronna 633-4734



New Listing
VERY NICE doublewide on lg lot on permanent foundation at end of cul-de-sac. 3 BR, 2 BA, split BR concept, open floor plan. Priced to sell at \$72,900. #118336 Call Ronna 633-4734



Tri-Plex Each unit 1 BR, 1 BA, currently undergoing renovations. Convenient Caredo location. Call Larry 654-1926 for more details. #117989 \$75,300



Investors, MU Students, St. Mary's Med. Ctr., EMU's. First time buyers, owner says SELL! 3 BR, 1 BA on large level for near \$59,900. Carpet, tile, & bright kitchen cabinets. #116685 Call Paul 633-1622



Million Rare find in heart of Milton. 3 BR, 2 BA, doublewide on 4 large lots, 2nd home of little value. Garage & more. Land could be used for appts, townhomes, etc. A must see if you are looking for large yard in Milton! #11734 Call Paul 633-1622 \$80,950



Investor Specials - 2 for the price of 1! 2 BR, 1 BA each house, potential \$900 per month income. \$42,500 for both houses. #114955 Paul 633-1622



Price Reduced
Looking to Downsize, first time buyer. Looking to get away from condo/leas? Then 13 Nedra Dr., Guyan Estates is the place. 3 BR, 1 BA, new carpet, HW floors, kitchen appliances, lg deck & more! A must see! #116997 \$127,500 Call Paul 633-1622



Price Reduced
Bville Rare Find 3 BR, 1.5 BA, lg FR w/frp, 2nd flp in kitchen DR, Att. & det. garage. This home is in move-in condition. Call Paul 633-1622 for details. #116806 \$198,900 Paul 633-1622



Price Reduced
Indian Branch & Burlington Rd. 40x123 \$85,000 Call Larry 654-1926
Big Hurricane Creek 7 Acres \$24,900 Call Larry 654-1926
Hidden Village Doublewide ok \$22,000 up Call Ronna 633-4734
Heath Creek Rt. 10 Doublewide lots 97x190 Avg size. \$26,900 Call Paul 633-1622



Price Reduced
RARE FIND! 13+ acres with creek front, approx. 4 level acres & a detached home site, nestled in the woods. Ready to build your log or other style dream home. \$82,500 Paul 633-1622



Price Reduced
15,000 sq. ft. commercial building w/office space & fenced doors for \$200,000. Elevator, flexible parking, storage area. On busy 4th Ave. Call Jeremy 646-4491 for details. #116841



Price Reduced
Very Nice 4 BR, 1 BA on Jackson Ave. Lots of remodeling completed. Move-in condition. A must see. \$89,900 #116315 Call Jeremy 646-4491



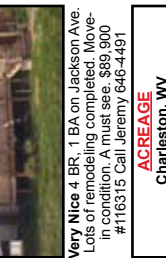
Motivated Seller
West Pea Ridge Area. 3-5 BR, 2 BA (1 unfinished) LR, Dining/Kitchen Combo. Laminate floors/carpet, single car garage. Needs a little TLC, landscaping. Motivated Seller. #115190 #117582 Paul 633-1622



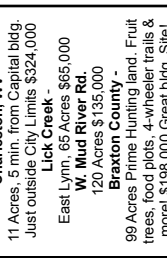
Price Reduced
15,000 sq. ft. commercial building w/office space & fenced doors for \$200,000. Elevator, flexible parking, storage area. On busy 4th Ave. Call Jeremy 646-4491 for details. #116841



4 BR
Very Nice 4 BR, 1 BA on Jackson Ave. Lots of remodeling completed. Move-in condition. A must see. \$89,900 #116315 Call Jeremy 646-4491



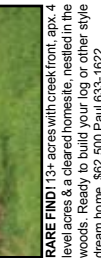
ACCREGE
Charleston, WV
11 Acres, 5 min. from Capital bldg. Just outside City Limits \$324,000
Lick Creek
East Lynn, 65 Acres \$65,000
W. Mud River Rd.
120 Acres \$135,000
Braxton County -
99 Acres Prime Hunting land. Fruit trees, food plots, 4-wheeler trails & more! \$198,000 Great bldg. Site!
Call Paul 633-1622



Price Reduced
Million Rare find in heart of Milton. 3 BR, 2 BA, doublewide on 4 large lots, 2nd home of little value. Garage & more. Land could be used for appts, townhomes, etc. A must see if you are looking for large yard in Milton! #11734 Call Paul 633-1622 \$80,950



Price Reduced
Investment opportunity. Near Ritter Park. Lg duplex w/great occupancy rate. Both units have stove, refrigerator, range, washer, dryer, furnished each unit. Det. garage, off-street parking. #118245 \$92,500. Call Ronna 633-4734



Price Reduced
Investment opportunity. Near Ritter Park. Lg duplex w/great occupancy rate. Both units have stove, refrigerator, range, washer, dryer, furnished each unit. Det. garage, off-street parking. #118245 \$92,500. Call Ronna 633-4734